

INSTRUCTIONS TO USE THE CHAT

- I. Click on **CHAT NOW** button



Currently this button is not being displayed on the site. Please note that the **Chat Now** button will be available on the webpage on the day of chat.

You can start your chat by clicking on **CHAT NOW** button.

- II. Select **username and password**

Start FlashChat using HTML-based login

Username: [Register](#)

Password: [New Password](#) [Current Password](#)

Language: ▼

If you are a new user, you have to register yourself to the chat system. Please click on **Register** link to continue with registration page.

If you have already registered with us, please enter your username and password in the given text boxes and click on **Login >>**

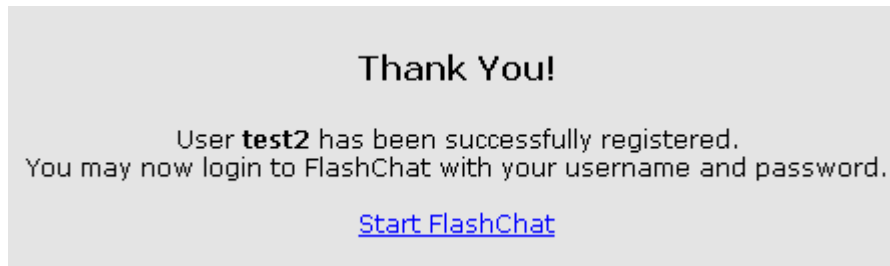
III. Register yourself

New User Registration	
You can later modify your profile, when in FlashChat, by clicking your name in the room list	
* Required fields	
* User name:	<input type="text"/>
* Password:	<input type="password"/>
* Confirm Password:	<input type="password"/>
* Full Name:	<input type="text"/>
Gender:	<input type="text" value="Male"/>
Location:	<input type="text" value="USA"/>
* E-mail:	<input type="text"/>
Program of Interest	<input type="text"/>
Terms and Conditions	
<p>In order to use this chat, users are required to provide a username. Neither the Administrators of this chat, or the Moderators participating, are responsible for the privacy practices of any user. Remember that all information that is disclosed in these areas becomes public information and you should exercise caution when deciding to share any of your personal information. Any user who finds material posted by another user objectionable is encouraged to contact us via e-mail at grad-i@okstate.edu; OSU Graduate College, 202, Whitehurst, Stillwater, OK 74078 1019</p> <p>We are authorized by you to remove or modify any data submitted by you to this chat for any reason we feel constitutes a violation of our policies, whether stated, implied or not.</p> <p>This site may contain links to other web sites and files. We have no control over the content and can not ensure it will not be offensive or objectionable. We will, however, remove links to material that we feel is inappropriate as we become aware of them.</p> <p>The opinions expressed in this session are solely those of the authors and do not necessarily represent the views of Oklahoma State university, the OSU Graduate College or its constituents.</p> <p>By selecting the "I Agree" checkbox, you agree that you, the user, are 18 years of age or over. You are fully responsible for any information or file supplied by this user. You also agree that you will not post any copyrighted material that is not owned by yourself or the owners of these forums. In your use of these forums, you agree that you will not post any information which is vulgar, harassing, hateful, threatening, invading of others privacy, sexually oriented, or violates any laws.</p> <p>If you agree with the rules and policies stated in this agreement, and meet the criteria stated herein, proceed to select the "I Agree" checkbox below</p> <p><input type="checkbox"/> I Agree</p> <p><input type="button" value="Save"/></p>	

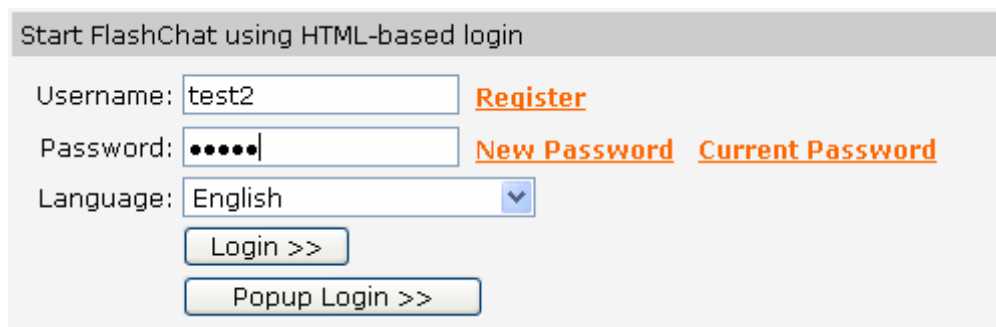
You are requested to fill out the user name, password, confirm password and full name. It is mandatory to provide this information. It would be helpful for us if you can provide us with your gender, age, location, email, Program of interest and address. After keying in above information, please read OSU terms and conditions to use the chat. If you agree with the terms and conditions, check the box next to it and submit your registration by clicking on **Save** button.

If you disagree with the terms and conditions of chat, kindly close the webpage.

Once you submit your registration, you will see the **Thank you** page indicating successful registration with chat system. You can continue to chat by clicking on **Start FlashChat** link.



After clicking on **Start FlashChat** link you can login to chat

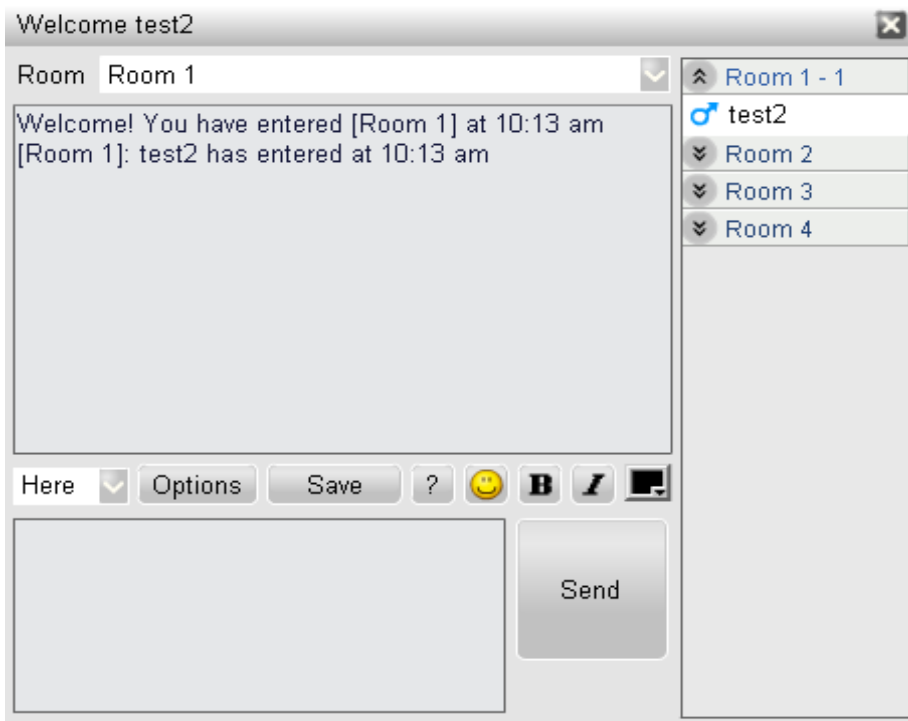


The image shows a login form with the following elements:

- Header: Start FlashChat using HTML-based login
- Username: [Register](#)
- Password: [New Password](#) [Current Password](#)
- Language:
-
-

IV. Start chatting

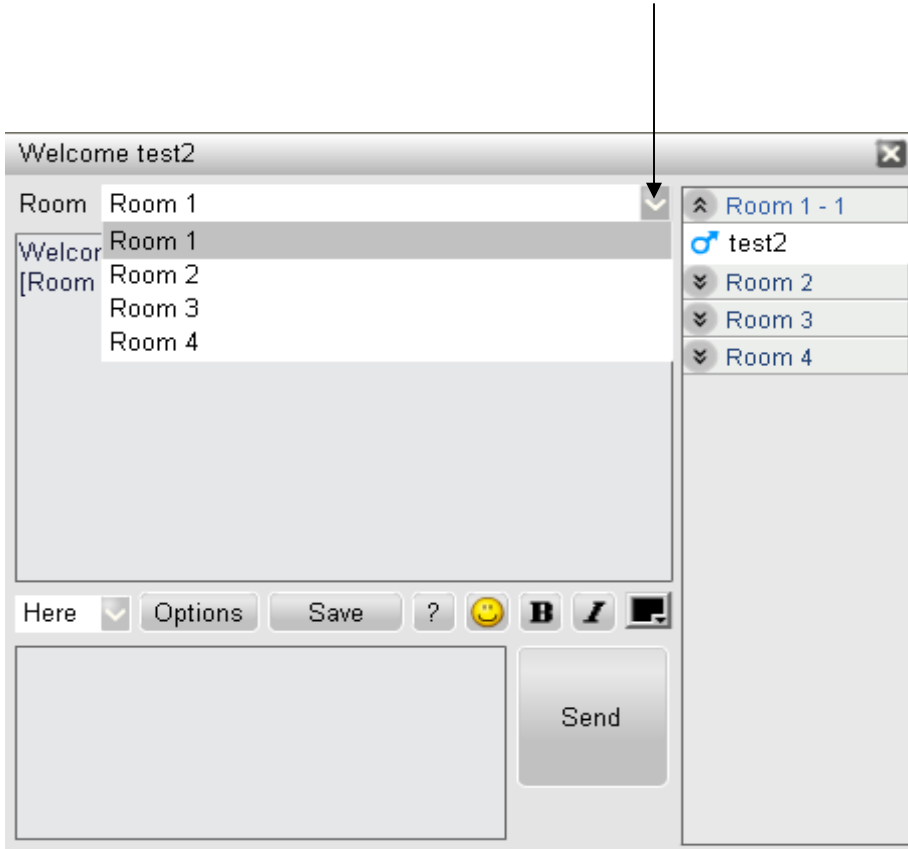
This is the general screen you will see. The left part is dedicated to the chat process. The right part is dedicated to Chat rooms where you can see chat participants and chat leaders.



V. Select **Facilitator**

Choose the **facilitator** you want to chat with.

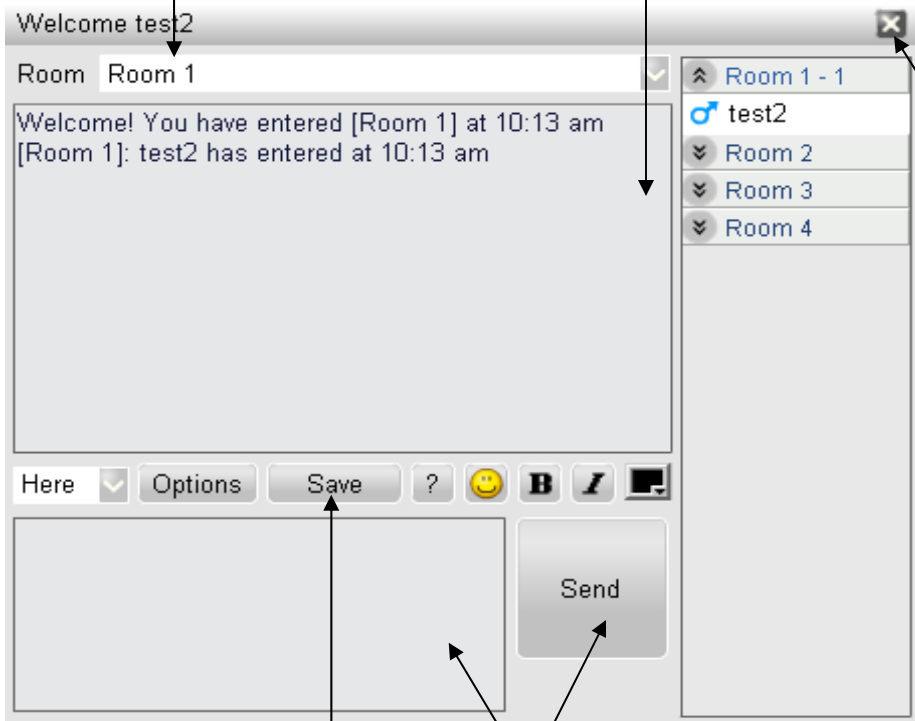
By clicking on one Room, you will be able to chat with your facilitator.



VI. Chatting environment

Room you are chatting in

The conversation will appear in this screen



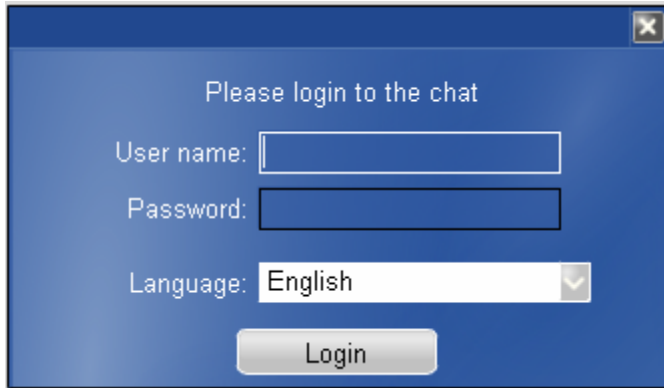
Exit the chat

This button allows you to save the conversation

1. Enter your text here
2. Send it by clicking on send button

VII. Reenter the chat

You can reenter the chat once you exit by logging in back through this screen.



A blue dialog box titled "Please login to the chat" with a close button in the top right corner. It contains three input fields: "User name:" with an empty text box, "Password:" with an empty text box, and "Language:" with a dropdown menu showing "English". Below the fields is a "Login" button.

Please login to the chat

User name:

Password:

Language: English

Login